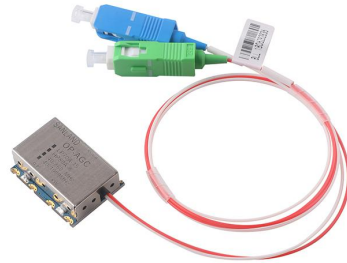


FEATURES

- Excellent linearity
- Extremely low noise
- Excellent flatness
- Standard CATV outline
- Rugged construction
- FC/APC SC/APC
- AGC



DESCRIPTION

The HP80A-8 has an FC/APC or SC/APC Connector. The amplifier supply voltage pin Connect to 5V(DC) . The modules have a monomode optical input Suitable for 1300 to 1600nm wavelengths a terminal to monitor the photo diode current and an electrical Output having a characteristic impedance of 75Ω.

QUICK REFERENCE DATA

SYMBOL	PARAMETER	CONDITIONS	MIN	MAX	UNITS
f	Frequency range		40	1000	MHz
S ₂₂	Output return losses	f=40 to 1000 MHz	-	-12	dB
	Optical input return losses		45	-	dB
I _{tot}	Total current consumption(DC)	V _B =5V	230	280	mA

HANDLING

Fiberglass optical coupling: maximum tensile strength=5N;minimum bending radius=35mm

SANLAND TECHNOLOGY

·Tel: 86-0755-28968333
·Fax: 86-0755-89724455
·2019.7

·Http: www.sanlandtech.com
·E-mail: info@sanlandtech.com

LIMITING VALUES

In accordance with the Absolute Maximum Rating System

SYMBOL	PARAMETER	CONDITION	MIN.	MAX.	UNITS
P _{in}	optical input power		-	3	mW
T _{stg}	Storage temperature		-40	+85	°C
T _{mb}	Operating mounting base temperature	continuous	-20	+85	°C
ESD	ESD sensitivity	Human body model; R=1.5KΩ;C=100pF	500	-	V

CHARACTERISTICS

(Bandwidth 40 to 1000MHz; T_{mb}=25°C, V_B=5V, Z_S=Z_L=75 Ω)

SYMBOL	PARAMETER	UNIT	MIN.	TYP.	MAX.	CONDITIONS
s	responsively	V/W	850	-	-	λ=1300nm-1600nm
FL	Flatness of frequency response	dB	-	-	±0.75	f=40 to 1000 MHz
V _o	Output Voltage	dBuV	79	80	81	P _{opt} = -8 ~ +2dBm
CTB	Composite Triple Beat	dB	-	-	-63	60 channels flat; measured at 543.25 MHz; Optical power receiving at -1dBm
CSO	Composite Second Order distortion	dB	-	-	-60	
CNR	Noise carrier rating	dB	-	50	-	
S ₂₂	Output Return Loss	dB	-12	-	-	f=40 to 1000 MHz
I _{tot}	Total Current Consumption	mA	230	250	280	V _B =5V

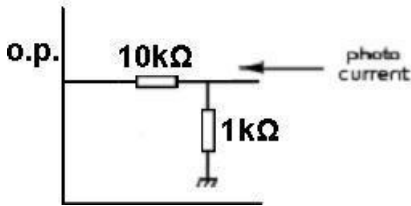
The module normally operates at V_B=5 V

SANLAND TECHNOLOGY

·Tel: 86-0755-28968333
 ·Fax: 86-0755-89724455
 ·2019.7

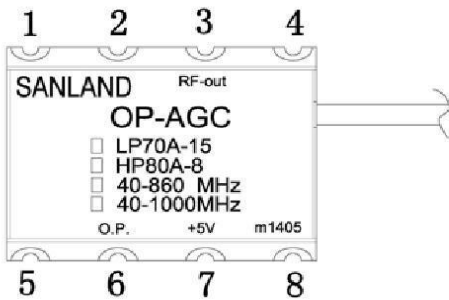
·Http: www.sanlandtech.com
 ·E-mail: sunny@sanland-catv.com

PHOTODIODE CURRENT MONITOR PIN



PIN DESCRIPTION

Optical power	Voltage	Optical power	Voltage
2.50	1.778	-4.00	0.398
2.00	1.585	-4.50	0.355
1.50	1.413	-5.00	0.316
1.00	1.259	-5.50	0.282
0.50	1.122	-6.00	0.251
0.00	1.000	-6.50	0.224
-0.50	0.891	-7.00	0.200
-1.00	0.794	-7.50	0.178
-1.50	0.708	-8.00	0.158
-2.00	0.631	-8.50	0.141
-2.50	0.562	-9.00	0.126
-3.00	0.501	-9.50	0.112



PIN	Description
3	RF OUTPUT
6	Photodiode current monitor pin
7	+5V
1,2,4,5,8	GND

MODULE DIMENSIONS (UNIT:mm)

